

# Village News

**in Swindon Village, Cheltenham**

*Your local newsletter sponsored by the Parish Council and delivered by volunteers.*

**June 2024 Edition No.504**

## Upcoming Events



### JUNE

**Thursday 6th Village Hall AGM** Village Hall 7.30pm

**Saturday 8th Art Exhibition** Village Hall 2pm - 4pm

**Sunday 9th Litter Pick.** Meet 10.30am at Village Hall

**Monday 10th Parish Council Meeting - 7:30pm** in the Village Hall bar area

**Wednesday 19th Swindon Village Society.** Talk - 'Funerary Monuments in Gloucestershire' by John Reid. 7.30pm. Visitors welcome.

### JULY

**Saturday 6th Church Cake Sale** details to follow

**Monday 8th Parish Council Meeting - 7:30pm** in the Village Hall bar area

**Sunday 14th Litter Pick.** Meet 10.30am at Cross Hands

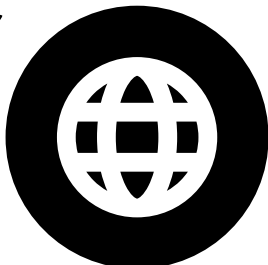
**Wednesday 18th Swindon Village Society.** We are still trying to arrange a garden visit in the evening on this or a near date. See this space next month.



# A Connected Community!



Using your phone's camera to hover over each QR Code square below for direct link access.



## Parish Council Website

For full, detailed information from and about the Parish Council visit [www.swindonparish.org.uk](http://www.swindonparish.org.uk)



## Parish Council Facebook Page

A public page for live information and news updates from the council:  
[www.facebook.com/swindonparish](http://www.facebook.com/swindonparish)



## Swindon Village Facebook Community Group

A private group for the discussion of local issues, sharing and requesting help in the local community.



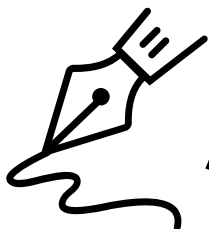
## Anti-Social Behaviour

If you have any concerns about anti-social behaviour do not hesitate to contact the police.



**Ring 101** (you may be charged for this phone call) or **email**  
[101@gloucestershire.police.uk](mailto:101@gloucestershire.police.uk)

NB: Get an INCIDENT REPORT NUMBER and let the parish know about it. If the police are not made aware of the problem THERE ISN'T A PROBLEM.



# A Note From The Editor

---

First of all, I must apologise for the diary mix up on the front of May's edition. I think my two brain cells must have been working independently of each other and made a right mess!

My pair of brain cells usually function adequately, but they have been a little challenged this month. Three of the software systems that I use regularly have had an "upgrade". I use this term lightly as I cannot see the merits of any of the changes. The search facility on the emails I use for The Village News has vanished. That will make for fun and games in the future when I'm trying to check what I have and haven't included. Maybe I should just apologise now for future hiccups!

You will notice that I have refrained from any comparisons to tv shows this month. It has been tough, but I would like to commend one Facebook comment in relation to that traffic situation. "We need Sid James and the rest of the Carry On team to help"

*Karren*

P.S. We take a break in August, so next month will be your last newsletter until September. If you have any diary additions for August, please let me have them by 16th June.





# Swindon Parish Council

---

## SWINDON PARISH COUNCIL REPORT

As I write, this week has been one of the busiest yet most rewarding weeks of my time as parish clerk. And it's only Thursday lunchtime! I will describe the week and that will pick up the many and varied issues that we are addressing.

It started with the Annual Meeting of the Parish Council on Monday. At the May meeting the law requires us to elect a Chair. James had decided not to stand. He has a baby now and, can you believe it, that takes time and energy. Lisa was elected Chair and, I am pretty confident, is the first woman to be elected Chair of our council. Congratulations to Lisa. James remains an active councillor, of which more later! The meeting allowed us to wrap up 2023-2024 and get all the paperwork squared away. Everything will shortly appear on the website but feel free to ask me anything. We also had members of the public present, any of whom would make an excellent Parish Councillor! You know who you are...

On Tuesday we held the Annual Parish Meeting. Having been Chair of the Council for all of 24 hours Lisa had to deliver a speech to old friends and new about what the Council had been doing in 2023-2024. Lisa did it her way and it was brilliant. What assets we have in Lisa as Chair and Alison as Vice Chair.





# Swindon Parish Council

---

Borough Councillor Flo Clucas spoke of the sad loss of her friend and colleague former Parish Councillor Helen Wells and presented Helen's Freedom of the Parish scroll to Rich and Emma, Helen's family. A very emotional moment for us all.

Afterwards we enjoyed refreshments arranged by Parish Councillors Sharon and Alison and voted on the names put forward for the Amenity Area. Eight names had been submitted; it was wonderful that people had engaged with this. The winning name, by the narrowest of margins, was "Old Mill Way". The area runs very close to the site of the old Swilgate Mill. The millpond for Swilgate Mill could be seen until the middle of the last century in the area now covered by Manor Court. Thank you to Susan for the winning suggestion!



On Wednesday Manor Road was the focus. Parish Councillors James and Sharon, County Councillor Bernard Fisher and yours truly met with representatives of Persimmon (the developer) and Gloucestershire Highways regarding the catastrophic effect the closure of Manor Road is having on the local community, both the people and the economy. Those present were left in no doubt that the present state of affairs is intolerable. James picks up the story elsewhere in this issue.

No two days are the same as parish clerk and on Thursday it was time to investigate the Village Hall sewer! A couple of lovely guys came to do a full flush through and a CCTV investigation. We expect the report in a week or so, but it looks as if the work needed to stop the recurring blockages will fall short of excavation and replacement. Phew!



# Swindon Parish Council

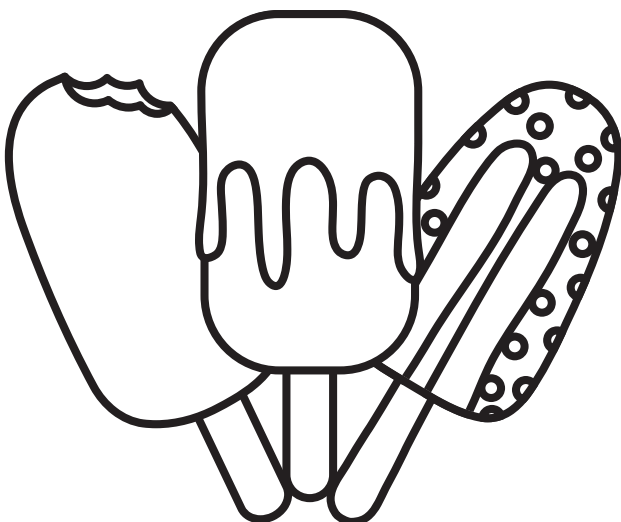
---

While we had our heads in the sewer, two more lovely guys came, this time from Ubico. They had been sent to investigate the fly tipping that had taken place in the Village Hall car park. Two large builders' bags had been deposited. As we have discussed before, fly tippers are happy to solve their problem by making it someone else's. Generally, fly tipping becomes the problem of the landowner. This is very harsh. In this case the Ubico lads took pity on us and heaved the bags onto their truck. In the course of doing this they recovered various tools, a nickel plated silver pot and some ratchet straps for strapping down loads on lorries. I got a cash box (sadly empty) and two pen knives. A big thank you to Borough Councillor Flo Clucas, who raised the issue on our behalf, and to Ubico for responding so quickly.

At this point Sally from the playgroup came over with some left over lollies which were much appreciated by the drain men and me. So there you have three and a half days in the life of a parish clerk. I'll leave you with a Gloucestershire Live headline.

**“Perfect Father's Day present with custom hard to lose gold balls.”**

I think that was supposed to be golf balls. And I can tell you from experience that there is no such thing as a hard to lose golf ball.



Shaun Cullimore  
Clerk to Swindon Parish Council





# Swindon Parish Council

---

## Manor Road Closure – An Update

The Manor Road closure, the first step in the development of Swindon Farm, has had a significant impact on residents, commuters and local business. At the Parish Council we have received numerous complaints about the issues it is creating. As local residents we are also impacted daily. In this article you can read about the details of the closure, what's being done and what the Parish Council is doing to try and reduce the impact.

### What is closed?

Manor Road is closed for 17 weeks from 29th April to road traffic. The closure is to enable the construction of a roundabout and installation of services that will serve the Swindon Farm development. Pedestrian access is being maintained throughout the closure so you can still walk to and from the retail park and village.

Following the completion of these works there will be temporary traffic lights for a short period just north of the roundabout to Sainsburys (this will remain open) to enable the new services and footpaths to be connected.

### What's the impact?

Traffic! Journey times along Kingsditch Lane at peak can be in excess of 30 minutes. Stagecoach has vastly reduced its service to the Village. Many people have been late for work, missed important medical appointments or simply given up trying to go out. Local businesses are suffering too with several reporting more than a 20% drop in custom. If you have been affected, we want to hear from you. Please contact us on the email below. It all helps!

## What are they doing?

The scheme for Swindon Farm includes a new roundabout on Manor Road to serve the development. Services, such as gas, water, electricity, and fibre optics all need to be installed. This is complicated by the fact that high voltage electricity and mains gas pipes already run under Manor Road and require diverting. This can only be done by the water and gas companies.

The works entails site preparation, 2 weeks (now complete), installation of services (approximately 6 weeks for water and 2 weeks for gas), construction of the roundabout, new paths and walkways, approximately 7 weeks.

## Who is responsible for what?

**Persimmons & their subcontractors:** responsible for the development as a whole and building the roundabout, new roads, paths and replacement greenery.

**Severn Trent:** responsible for diverting the water main and installing new pipework.

**Wales & West Utilities:** responsible for diverting the high-pressure gas main.

**National Grid:** responsible for diverting the high voltage cabling and installation of new cabling.

**Gloucestershire County Council Highways:** responsible for permitting the closure of roads, overseeing and approving the (road) construction methodology / timescales, and inspecting the final work.

**Cheltenham Borough Council Planning:** responsible for permitting the overall design and any conditions that are associated with it that the developer (Persimmons) must abide by.



## What is the Parish Council doing about it?

On Wednesday 15th May we, along with our local County Councillor Bernie Fisher met with the Persimmons site manager and representatives from the Gloucester County Council Highways Team. The meeting was constructive. Both Highways and Persimmons recognise the impact the closure is having. Persimmons are keen to accelerate construction (it saves them money!) but are somewhat constrained by both water, gas and electricity utilities. Following our feedback and discussion we have developed an action plan that includes:

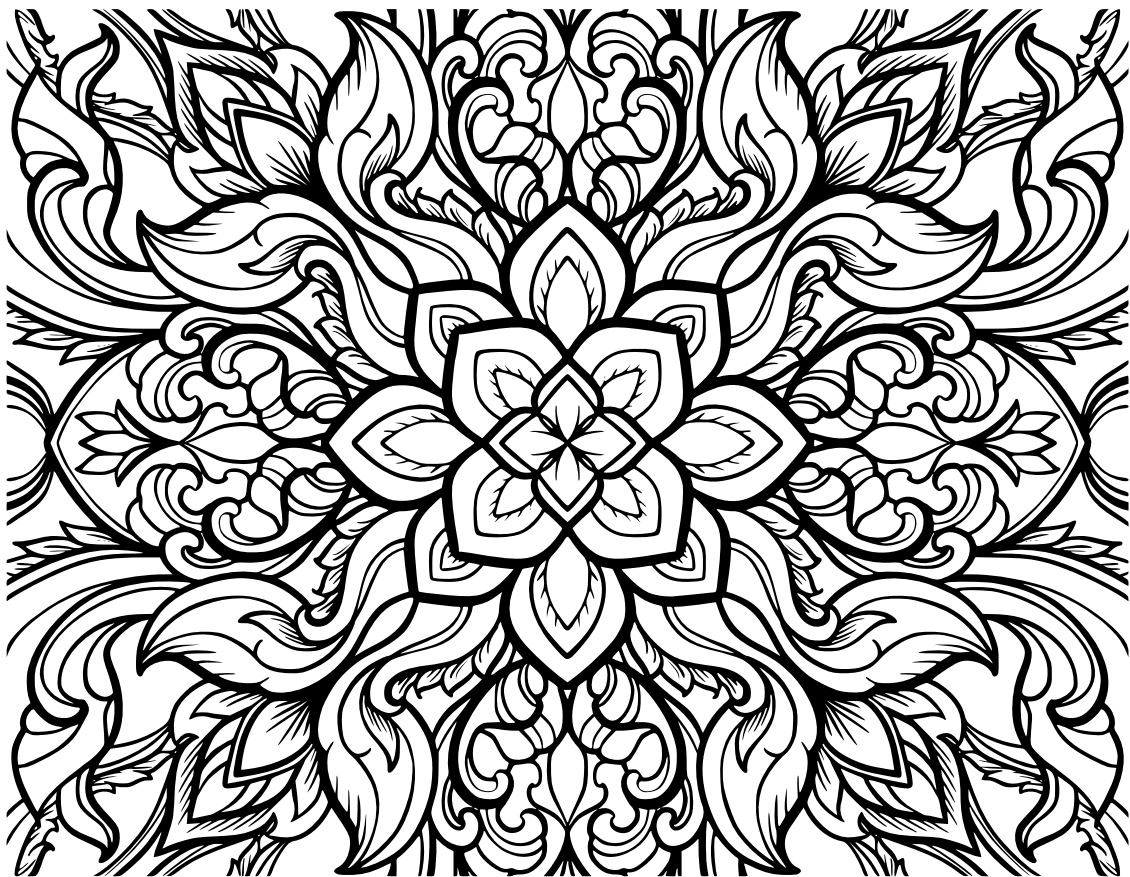
1. Persimmons are going to work with the Highways to identify how they can accelerate the works. This could include removing the restrictions on working beyond 4:30PM and weekends that were imposed as part of the permitting process and liaising with Severn Trent & Wales & West Utilities to speed up their work. They will report back to us on what is possible in two weeks. We are cautiously optimistic that the works could be accelerated by a week or two.
2. Increased and improved signage about the closure, with new signage further away from the closure to ensure people are aware and reduce the number of people getting caught out and having to do U-turns. 1.
3. Since the works started, only emergency works for utilities is allowed on Kingsditch Lane. Highways has no authority to stop this. They can fine utility companies for overrunning. Going forward Highways will immediately inform the Parish Council of any emergency work so we can advertise it on our social media and website to keep you informed and allow you to plan.
4. The current path will be tarmacked, and ramps will be installed on all road crossing, so the pedestrian access is accessible to all.

5. We will be holding a regular fortnightly meeting with the Persimmons' site manager and Highways throughout the entire development build to enable us raise issues and keep you informed on what is going on.

Separately, we are continuing to chase Stagecoach to address the reduction in service to Swindon Village.

If you have been affected by the Manor Road closure and would like to share how it is impacting you, then please do email us on: [james@swindonparish.org.uk](mailto:james@swindonparish.org.uk)

Cllr James Cornish  
Swindon Parish Council



**Mindful colouring for the adults**



FixMyStreet is an independent website which makes it easier to report problems in your community. Either the website or free mobile app can be used for reporting things which are broken, dirty, damaged or dumped, which need fixing, cleaning or clearing, like graffiti, dog fouling, potholes or streetlights that don't work.

FixMyStreet sends your reports directly to your local council, or whichever other authority is responsible for dealing with that problem. Reports are also published online (anonymously), so that others in the community can see what's already been reported. The council will respond directly to you and from that point on your correspondence is one-to-one.

To use FixMyStreet you can either access it via an Android or iOS app on your mobile, or via the FixMyStreet website.

To report a problem simply let the site locate you, type in your postcode or place name, or put the pin in the map to show exactly where the problem is, type in a description of the issue, then press Send. Check your email inbox for a confirmation mail, click on the link and job done. Your report is then automatically sent to the people whose job it is to fix it.

If you're using the app, you can start reports while offline, save them as a draft and finish them when you're connected to the internet again. This is really handy for any problems you spot (fly tipping, potholes etc) while in a rural location without a good signal.

Surely everyone wants to live in a clean and tidy environment and FixMyStreet is the quick, easy and efficient way to report and resolve issues to make your area a more pleasant place in which to live.



# The Swindon Village Society

---

And so to April. Our talk was by Elizabeth Poraj-Wilcznska and she told us the tale of Belas Knap and the nearby wood, Humblebee. Now Elizabeth is an archaeological illustrator and her attention was captured by Belas Knap many years ago. Indeed so captivated was she moved to live not far from the site and then visited it every evening or night for a year so that she could completely bathe herself in the whole ethos of the place. Belas Knap is over five thousand year old. Elizabeth could tell us much about what is known of the sites history. However, given its age much of that is speculation and best guess. But what was interesting is that she could then tell us about the atmosphere of the place and on a dark breezy autumn evening the place is going to have plenty of atmosphere.

The site was investigated in Victorian times but that meant that much of the history was disturbed and not recorded to modern standards. Bodies were found but the site is complex and over time may have had several purposes. This can all be read up by those who are interested. What I found interesting in her talk were some of the less tangible aspects of the place. If you approach Belas Knap from the Cleeve Common side with your dog there is a good chance that about one hundred yards short of the site the dogs manner will reveal that it has detected something. It may howl, it start searching for something. To a dog there is something disturbing in the in the atmosphere and I do not mean a badger. Then, because of the local topography the weather itself can be unusual in the immediate area with localised winds and rain. Oh, and the nearby wood, Humblebee has ancient access routes and site of interested of its own. I had always wondered about its name assuming that that too had ancient origins. However, it seems that not that long ago a mildly eccentric lady had a cottage not far away which itself had a mildly convoluted name which she twisted a little more to become Humblebee and that was how she referred to the wood and that name stuck.



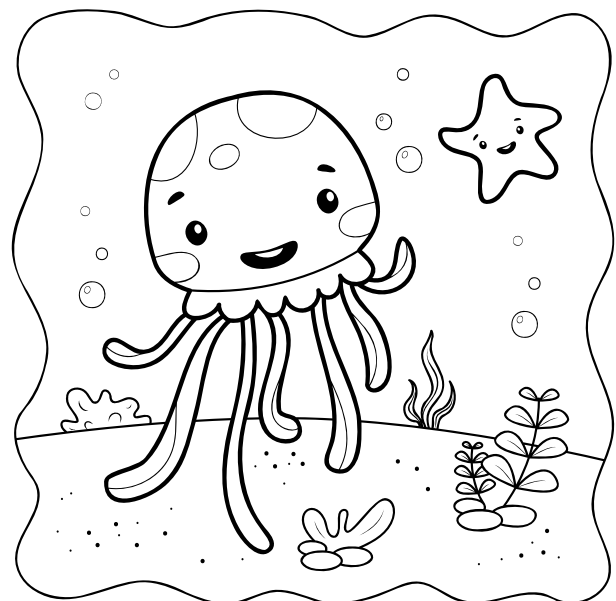
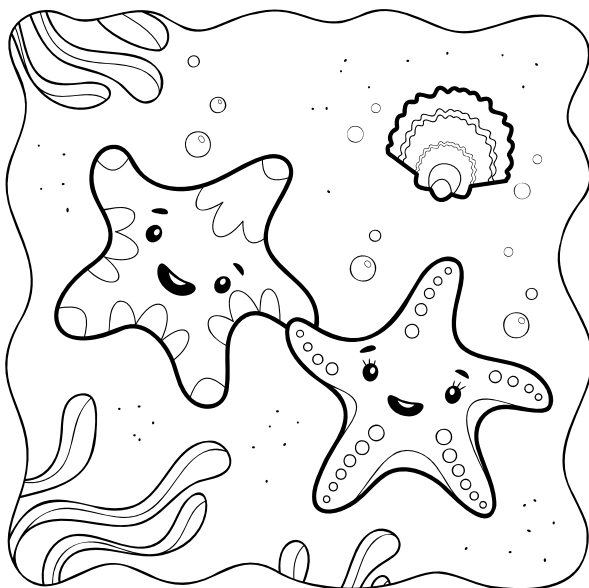
# The Swindon Village Society

So we had a much wider view of the site than that provided by the pure archaeology. I have been there several times, but next time I will go with wider eyes and tuned senses. I may need to borrow a dog.

So on to our future programme. In June John Reid will visit to tell us about 'Funerary Monuments in Gloucestershire'. For the July garden visit we have made an approach to a very interesting garden in Gretton to see if they can host us. Watch this space.

Then, outside the normal programme, we have agreed to include the village in the annual Heritage Open Days programme for the first time in a few years. So on Saturday 14th September we will invite visitors from the area to a talk on 'The History of Swindon Village', most probably in St Lawrence's Church. This will be followed by a walk around the village to see our more historic sites. If you are new to the village this is a good time to find out about where you live. The talk and walk will be free but the tea and buns afterwards will not be. Money to church funds.

Barry Simon





# St. Lawrence's Church

---

## RECTORY REFLECTIONS - REV JACQUELINE

June is already here! We are coming to the halfway point in the year and it seems to be flying by. As we herald the warmer weather and look forward to summer holidays, we also mark the start of exam season. Whatever qualification people are studying for, be they GCSE's, A'Levels, or degrees, there is always a chunk of the year which is taken up with revision, preparation and a certain amount of stress. I have memories of trying to revise for exams whilst the weather was tempting me outside but knowing that unless I put the effort in, the results wouldn't be great.

Exams are a divisive subject; on one hand, they are necessary to demonstrate knowledge and an application of learning and on the other, exams are a cause of pressure and anxiety. For those who prefer a more vocational and practical approach to being tested, written exams can be hugely difficult and contentious.

We are all tested throughout our lives - as I have discovered, exams do not stop when we leave school or university. Very often places of employment require continuous professional development and reward good progress and effort through salaries and benefits. We are tested outside the workplace too. Our lives are full of tests and challenges, whether they are physical illnesses, mental difficulties, financial problems, or family crises. As with exams, we have a choice about how we are going to face them. Either we can crumble under the pressure and run away, or we can find some inner strength and rise to the challenge and fulfil our potential about who we really are.

When we're tested, we have the opportunity to show others what we can do, instead of being tempted to shy away from the limelight.



# St. Lawrence's Church

---

Sometimes we live in danger of comparing ourselves to others and we worry that we don't match up to peoples' expectations. Tests, be they exams or life's challenges, require us to draw on our inner resources and resilience. God tests us all, but not to destruction. We are pushed to achieve our full potential so we can live our lives to maximum capacity.

So if the sunshine is tempting you away from revision or to procrastinate from whatever challenge you might be facing, trust that God wants the best for you and will be right beside you. The end result will be a reflection of the hard work you put in!

I wish everyone undertaking exams and tests the very best and pray you get the results you deserve!

“For surely I know the plans I have for you, says the Lord, plans for your welfare and not for harm, to give you a future with hope.”

Jeremiah 29:11

*Rev Jacqueline Henson*







# St. Lawrence's Church

---

## From the registers



### Funeral

*We commemorated the life of*

John Leslie William Kendrick      23rd April

St. Lawrence's Church

# Chatterbox

Every Tuesday

10.30am to 12noon

Pop in for coffee/tea and biscuits  
and a good old chat about  
anything and everything.





# St. Lawrence's Church

---

## Regular Services

### **1st Sunday of the month:**

10.30am Together @ Ten Thirty all-age worship

6.30pm Holy Communion

### **All other Sundays:**

9.15am Holy Communion

6.30pm Evening Prayer

### **Every Wednesday:**

10.00am to 12noon Church open for private prayer

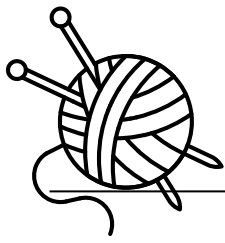
St. Lawrence's Church is part of the



## **Enquiries about baptisms or weddings**

If you would like to enquire about baptism (also called christening) or would like to book a wedding in St Lawrence's church, please contact Karen in the Team Office on 01242 244373 or [admin@northchelt.org.uk](mailto:admin@northchelt.org.uk)

You can contact the Team Vicar, Revd. Jacqueline Henson, by email: [revjacquelinehenson@gmail.com](mailto:revjacquelinehenson@gmail.com) or by phone: 01242 220053 or via the office as above.



# Marle Hill WI

---

We met on Monday 13 May – a week later than our normal meeting due to the Bank Holiday. We did not have a speakers this month as we were discussing the Resolution that was going to be voted on at the National Annual Meeting at the Royal Albert Hall in June.

The Resolution, which was asking the Government to increase NHS Dentists and NHS Surgeries. After a debate Marle Hill members voted yes for the resolution, which will be debated at the National Meeting in London.

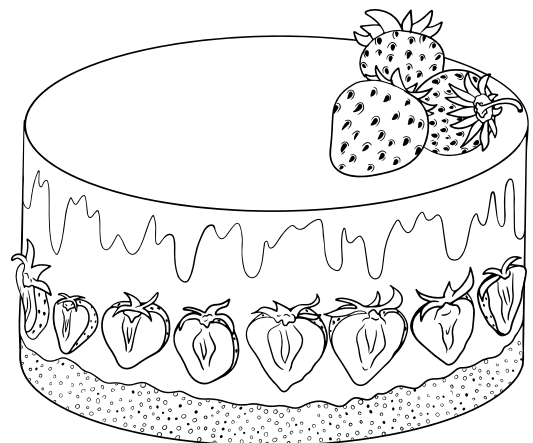
Another of our members was going to give a demonstration of how to get on to the National Website where there was an abundance of items for everyone, including craft, cookery and general information, but unfortunately the WiFi let us down, but if any members want to know more then they were advised to get in touch with her.

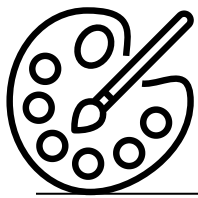
We had the bring and buy stall and then we had the business side of the meeting. We were informed of the dates for the book club, knit and natter, monthly lunch club. We once again asked for volunteers to help with the catering at the upcoming Royal Three Counties Show, and also for donations for cakes.

Do come along to our next meeting on Monday 3 June where one of our members will be giving a craft demonstration.

Visitors are always welcome.

Sue Davies  
Marle Hill WI





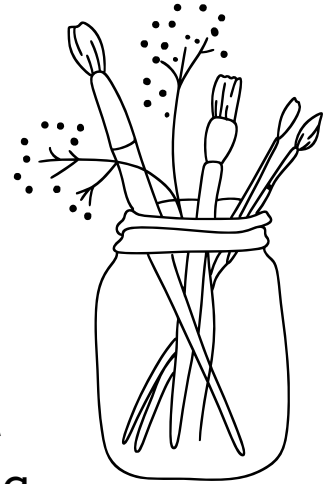
# Swindon Village Arts and Craft

---

Well its that time again, our club has its Annual Exhibition:

**JUNE 8th at Swindon Village Hall  
2pm till 4.30pm free entry**

Refreshments, work displayed by our members, and a display of art work from the village school based on the theme of the Olympics. Well worth a visit, so we welcome as many of you that can make it.

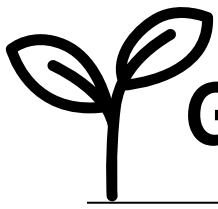


## **Moira Thomson Stoneman**

Moira Thomson Stoneman RGN RSCN of Benrines, Stantons Drive died peacefully in hospital on 20th April aged 92. Moira trained in Edinburgh and worked at Delancey Hospital Leckhampton, the Special Care Baby Unit St Pauls and the the Family Unit, RAF Seletar, Singapore.

Moira and Rod moved to the village with their children Fiona and Craig on return to the UK from Singapore in late 1966. She was active in the Wednesday Club and for seven years in the 1970's to early 80's was secretary of Swindon Village Gymkhana held on farmland around the village which drew in as many as 150 competitors from miles around. Ill health caused her to hand over the reins but so ended the annual gymkhana. Profits went to funding the new village hall.

She loved living in the village and never wished to be anywhere else.



# Go grow with Dale

---

Happy Summer to all you Village Gardeners! Summer really is the most colourful time of the year in most gardens, I have to mention the display outside of 43 Church Road always looks especially breathtaking this time of year.

This month I wanted to share another easy to grow food that anyone can do and save money with, Spring Onions. Spring Onions are super easy to grow and I make at least 2-3 sowings a year for a long harvest period, last year I was harvesting from June until late November.

The best varieties to start with are 'White Lisbon' & 'Performer'. Both varieties can be sown between March & September and prefer full sun, but personally I've found the 'Performer' variety to do very well in part shade and lasts better in cold conditions. Always keep them well watered, even on the day you sow them, they're similar to carrots in this sense.

If you can, it's a good idea to sow Spring onions somewhere with other things growing, so that they're not so obvious to hungry pigeons. If you really want them to grow fast and be well protected, use a cloche. After a month or so either way, birds should leave them alone.

Although the seed packets will tell you otherwise, Spring Onions can be harvested pretty much whenever you want, once they're big enough. This will be between 8-12 weeks. They only store for a max of a month once out of the ground, so I find it's best to leave them in the ground until a few days before or even on the day of a meal you plan to use them. I most commonly use them in my prawn & chorizo stir fry!

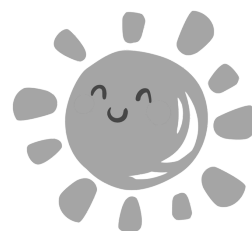
That's all for this month, thanks for reading, Dale.

In which city would you find:

1. The Spanish Steps, the Baths of Caracalla and the church of San Pietro in Vincoli
2. The Merlion, Sentosa cable car and Raffles Hotel
3. Schönbrunn Palace, St. Stephen's Cathedral and the Sigmund Freud Museum
4. Jet Age Museum, Kingsholm stadium and Blackfriars
5. Haight-Ashbury, the Oracle stadium and Alcatraz Island
6. Musee D'Orsay, the Pompidou Centre and St. Sulpice
7. Victoria Peak, Star Ferry and the Monastery of the 10,000 Buddhas
8. Plaza de la Revolucion, El Malecon and the Hotel Nacional
9. Christiansborg Palace, Tivoli Gardens and the little Mermaid
10. Arthur's Seat, the Royal Mile, Holyrood House

## Family Games Afternoon!

Saturday June 22nd 1pm to 6pm  
@ Swindon Village Hall and Park



## GAMES

Rounders, table tennis,  
toddler toys and much more!

- Bar open until 5:30
- Ice lollies for sale
- Bring a picnic
- Inside if wet weather



# AGM

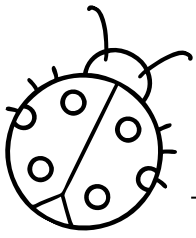
**THURSDAY 6TH OF JUNE  
7.30PM @ SWINDON VILLAGE HALL**

The village hall committee will be meeting for an annual general meeting to discuss the previous years events, bookings and financial overview.

The committee is run by local volunteers that are all residents of Swindon Village Parish. The AGM is open to public attendance and welcome you to come along to participate and positively contribute in this open meeting.

The village hall is a valuable community asset and additional support for the hall and the committee is welcome as always! **Thank you.**





# Swindon Village Early Years

---

It is with a heavy heart but a happy head that we have made the decision, after 23 fabulous years at playgroup, to step back and let some younger lovely ladies take over.

We have been so fortunate to have had such a long career, met so many wonderful families and have had the support from hard working and sincere staff.

We are delighted to be able to inform you that Sharon Montague (current staff member) and Stacey Sandey who worked for Swindon Village Early Years a few years ago have come together and agreed to take over the playgroup.

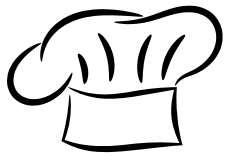
Sharon and Stacey will be issuing their own newsletter so that parents of younger children are made aware of any changes. However, for us, we will continue to offer the best support to you and your children up until the end of the summer term. Sharon and Stacey will take over the playgroup from September of this year.

We wish them both all the happiness they both deserve in their new venture and hope they enjoy it as much as we have.

Lots of love to you all  
Sally & Debbie

## Answers to Quiz

1. Rome
2. Singapore
3. Vienna
4. Gloucester
5. San Francisco
6. Paris
7. Hong Kong
8. Havana
9. Copenhagen
10. Edinburgh



# Bekah's Bites

---

## Ginger Cookies

Oven at 180 degrees. A very easy recipe with great rewards. These cookies are equally as good as chocolate chip cookies. Now I'm thinking you could add dark chocolate chips to these cookies...best of both worlds.

### Ingredients:

- 100g self-raising flour
- 50g block margarine/vegan equivalent
- 1 tsp dry ginger
- 1 tsp bicarbonate soda
- 40g sugar
- 1 tbsp golden syrup

### Method:

1. Sieve the flour, ginger and bicarbonate of soda into a large mixing bowl.
2. Stir in the sugar.
3. Rub the margarine into the dry ingredients until it all comes together to look like breadcrumbs.
4. Stir in the golden syrup and then use your fingers to make the mixture into a firm dough.
5. Use your hands to roll the mixture into balls, similar size to golf balls.
6. Add them to a greased baking tray and flatten them so they look like a golf ball that a giant has stepped on.
7. Bake for 10 minutes until golden brown.
8. Allow to cool a little before removing them from the tray.



**LIGHT BITES | CAKES  
| ARTISAN BAKER  
PASTRIES & BREAD |  
MILKSHAKES |  
CARDS & GIFTS**

**great  
coffee  
starts  
here..**



@mooshco



24 Chosen View Road, Kingsditch  
Trading Estate, Cheltenham, GL51 9LT

# KW SHARPENING SERVICES

At KW Sharpening we can provide a professional service to sharpen almost all bladed items be it Garden Tools, Kitchen Knives or Chainsaws. We use the latest machines to give you the best service and sharpest edge for your tools. We pride ourselves on having 133 5 Star reviews on Google. If in any doubt, please give me a ring to discuss your sharpening needs.

## We specialise in the following:

- Dog Grooming Scissors and Clipper Blades
- Horse Clipper Blades
- Clipper Servicing
- Hairdressing / Barbering Scissor
- Carpentry Tools Chisels, Planer Blades etc..
- Circular / Chop Saw Blades



*Please give me, Ken a ring to arrange a booking, and subject to prior workload most jobs are done in 48 hrs.*

*If an item is needed urgently, I keep slots available for a same day service and if the workload allows it can be done whilst you wait.*

**Unit 15 Space Business Centre, Tewksbury Road (Behind Homebase) Cheltenham GL51 9FL**

Call: **07379 422942** Email: [ken@kwsharpening.co.uk](mailto:ken@kwsharpening.co.uk)

Instagram: [@kw\\_sharpening](https://www.instagram.com/kw_sharpening) Web: [www.kwsharpening.co.uk](http://www.kwsharpening.co.uk)

# Rose Preddy

Mobile Hairdresser  
also fully qualified in  
Reflexology &  
Indian Head Massage

**Mobile 07767 202634**  
**Home 01242 672975**



## PW Footcare

Foot Health Practitioner  
P. White.Dip SAC FHP, RGN, BSc (Hons)



Qualified and insured.  
Providing a mobile clinic to  
people at home or in care  
homes. Using sterilized  
tools. DBS checked.

### Conditions Treated

Corns and calluses  
Ingrown toenails  
Cutting and filing toenails and thickened toenails  
Verrucas  
Athlete's foot  
Diabetic foot care

Contact Pushpa for any further information on

**07873575560**

**01242 250691**

Email: [pushpa@pwfootcare.co.uk](mailto:pushpa@pwfootcare.co.uk)  
Website: [pwfootcare.co.uk](http://pwfootcare.co.uk)

## ADVERTISE YOUR BUSINESS HERE

Buy two months,  
get a third free

- Quarter Page £9
- Half Page £18
- Full Page £36
- Artwork design available  
FOC
- Hand delivered to 900 homes  
in Swindon Village

### THE 1:1 DIET

by Cambridge Weight Plan



**You can  
absolutely  
100% do this.**

For definite. No doubt.



comfortable home office  
with free parking

Contact your local Consultant

**Jackie on 07990 503067**

[jackiemcdonough60@gmail.com](mailto:jackiemcdonough60@gmail.com)

to book your initial free consultation



## **SWINDON PARISH COMMUNITY ORGANISATIONS**

<b>Footpaths</b>	John Heathcott	527753
<b>Scouts, Cubs, Beavers</b>		info@ 1sv-scouts.co.uk
<b>Rainbow Guider</b>	Hannah Butler	07464 784155
<b>Village Hall Chair</b>	Jana Bridger	07913 911930 swindonvillagehall@gmail.com
<b>Village Hall Bookings</b>	Jana Bridger	swindonvillagehall@gmail.com
<b>Village News Distribution</b>	Hugh Evans	241678
<b>Play Group</b>	(Playgroup hours) For Sept 24 admission	690479 07949 352507
<b>School Headteacher</b>	Geraint Mills	690016
<b>Friends of the School</b>		chairfosvps@gmail.com
<b>Art &amp; Crafts Club</b>	Lynne Mumford	07515 461876
<b>Swindon Village Society</b>	Barry Simon	521723
<b>Mary Godwin Under 5s</b>	(Playgroup hours)	mgu5@hotmail.co.uk
<b>Marle Hill W.L.</b>	Sara Jefferies	07477894639 / 692500

Please inform the editors of any changes to the contact details for village organisations.

**Deadline for the next issue of the Village News is the 16th June 2024**

Please send contributions to the editors via Karren Parsons  
at 29 Dark Lane or e-mail [village-news@swindonparish.org.uk](mailto:village-news@swindonparish.org.uk)

## SWINDON PARISH COUNCIL

Cllr. James Cornish (Chairman)	07950 196709
Cllr. Lisa Whitaker	07715 470842
Clr. Sharon Collicutt	07884 184423
Cllr. Natalie Blankley	07725 948935
Clr. Alison Berry	07754 006634
Clr. Lynne Allen	07979 890134

**Vacancy 1 (please get in touch if you would be interested in joining)**

**Vacancy 2 (please get in touch if you would be interested in joining)**

**Vacancy 3 (please get in touch if you would be interested in joining)**

Mr Shaun Cullimore (Clerk to the Council) 07833 089435  
parish.clerk@swindonparish.org.uk

### Cheltenham Borough Councillors

Clr. Flo Clucas	255844
Cllr. Bernard Fisher	07523 421012

### County Councillor

Cllr. Bernard Fisher.....07523 421012

### Allotments Manager

Chaz Pearce..... Please contact via Shaun Cullimore

Swindon Parish and Community Website: <https://swindonparish.org.uk>

## ST.LAWRENCE'S CHURCH

Part of the North Cheltenham Team Ministry

Team Vicar: Revd. Jacqueline Henson revjacquelinehenson@gmail.com  
220053

Churchwardens: Hugh Evans, .....241678  
May Shurmer..... 241033

Tower Captain: Hugh Evans,.....241678

Organist: John Collins.....511950

### North Cheltenham Team Ministry Office

St. Nicolas' Church, Swindon Lane, 244373  
Cheltenham GL50 4PA admin@northchelt.org.uk

The office is open on Monday to Friday 9am to 12 noon. Outside these hours please leave a message on the answer phone.

**The contents of this newsletter do not necessarily reflect the views of the Editors or the Parish Council.**