

Village News

in Swindon Village, Cheltenham

Your local newsletter sponsored by the Parish Council and delivered by volunteers.

May 2024 Edition No.503

Upcoming Events



MAY

Thursday 2nd Cheltenham Borough Council Elections

Sunday 12th Helen's Walk (formerly save the Countryside walk).

Monday 13th Parish Council Meeting - 7:30pm in the Village Hall

Tuesday 14th Annual Parish Meeting 7.30pm Village Hall

Saturday 18th Swindon Village Society. Walk – John Heathcott will take us for a walk around Northleach. Meet at the Village Hall car park at 9.30. We will amalgamate cars and hopefully be able to offer lifts. Visitors Welcome

JUNE

Sunday 9th Litter Pick. Meet 10.30am at Village Hall

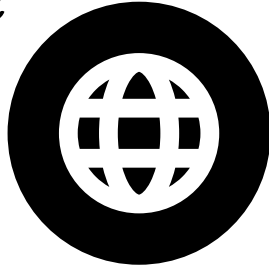
Monday 10th Parish Council Meeting - 7:30pm in the Village Hall bar area



A Connected Community!



Using your phone's camera to hover over each QR Code square below for direct link access.



Parish Council Website

For full, detailed information from and about the Parish Council visit www.swindonparish.org.uk



Parish Council Facebook Page

A public page for live information and news updates from the council:
www.facebook.com/swindonparish



Swindon Village Facebook Community Group

A private group for the discussion of local issues, sharing and requesting help in the local community.



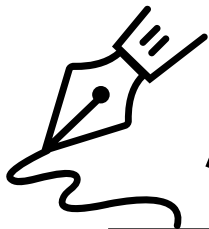
Anti-Social Behaviour

If you have any concerns about anti-social behaviour do not hesitate to contact the police.



Ring 101 (you may be charged for this phone call) or **email**
101@gloucestershire.police.uk

NB: Get an INCIDENT REPORT NUMBER and let the parish know about it. If the police are not made aware of the problem THERE ISN'T A PROBLEM.



A Note From The Editor

We used to love Midsomer Murders. Not the new one, with John Barnaby played by Neil Dugeon. It had to be John Nettles as his cousin Tom Barnaby. We particularly loved the exclamation of “What are you doing here Cully?” and waited to see where his daughter would pop up next and what tenuous link would be provided to the murder. We’d watch the ridiculousness of it and at the end would always say “Surely all that couldn’t happen in one village?”

Well.... Swindon Village is giving Midsomer a run for its money! Thankfully, we are murder free, unless you count the otter raiding the fishponds, but we have plenty going on here too. We have planning issues affecting the whole parish; imminent road closures; cars racing around the car park – probably because it’s the only traffic free area and of course there is the Phantom that roams at night. You never know where he is, but you can tell where he has been as there is a freshly erected traffic light in his wake! All we need now is the heron to come back and start a turf war with the otter...



Karren



Swindon Parish Council

SWINDON PARISH COUNCIL REPORT

At our April meeting the Parish Council posthumously conferred the honour Freedom of the Parish on Helen Wells. The award has only been made three times in the history of our Parish. The previous recipients were David Iliffe and Peter Allen. The award recognises the outstanding contribution that these individuals have made to the community.

For many years we have enjoyed the Save the Countryside walk in May. This year it will be held on 12th May in memory of Helen Wells, who was a prime mover of the walk and loved to entertain walkers at the end of their endeavours. More details elsewhere in this issue.

I had reported that the tree works planned in the Amenity Area would take place on 14th May. Concerns were raised about the plight of nesting birds so the works have been postponed until 5th September.

For those that don't know the Amenity Area is the pleasant woodland walk along the brook behind Manor Court. It is a horrible name. You will see elsewhere in this edition that we are proposing to change it and are seeking suggestions. We hope to make a decision at the Annual Parish Meeting on 14th May.

Work is underway on the Swindon Farm development that is part of Elms Park. To facilitate the works traffic lights have been in operation on Manor Road while a new entrance to the site is constructed. More controversially, there are plans to close Manor Road completely for a period of four months while a new roundabout is being built. This will be a huge inconvenience to residents and the Parish Council is querying why this long duration is necessary.



Swindon Parish Council

If all goes according to plan this edition should reach you just prior to the Borough Council elections on 2nd May. If you live in the parish but south of the Tewkesbury Road you will not be voting at Swindon Village Hall. Also, please remember that the rules have changed and you will need to take some form of photo ID with you to be able to vote.

The Parish Council is not allowed to pick sides or campaign in Borough Council elections, nor would we want to. However, we find it objectionable when we see disinformation being spread. A recent campaign leaflet stated that our present Borough Councillors are “only seen at election time”. In the last year at least one of our Borough Councillors has been present at 9 of the 12 meetings.

Our bid to purchase the Village Hall car park to secure its future for the community has hit a snag. There are problems with the sewer connection and it is unclear (at least to me) who has responsibility for effecting repairs.

Due to Bank Holidays we have rescheduled the up and coming litter picks. The ones we were going to hold on 5th May and 2nd June are cancelled. Instead we will do picks on 9th June and 14th July. The latter event starts from the Cross Hands pub. However, our litter picks on the south side of the Tewkesbury Road have attracted little local support. Understandably, if this continues our regulars will focus on their own areas. Please give an hour of your time to support this initiative.



Swindon Parish Council



There is an Environment Agency water level monitoring system where the brook goes under Windyridge Road. The readings are available on the web. It is quite interesting to see how the level of the brook changes.

By the way, the cabinet of the water monitor has the words “names.plot.fresh” on it. Have you heard of “What Three Words”? This is a system which can describe any three metre square on the planet using a combination of three words. For example, the entrance to my drive is “deep.coffee.worker”. The water monitor cabinet has a three word designation, presumably to enable maintenance staff to find it easily. Sadly, these three words relate to a square just north of Leicester.

You may remember I shared some geeky information about local trains a while ago. I have run out of useless train facts so I was wondering what material to use to provide light relief. I’ve decided I will share with you occasional crazy headlines and typos. There is no better source than the Gloucestershire Live website with its “latest local news, sport and business updates.” Here is a good starter.

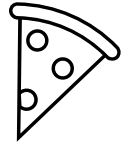
“Man's room destroyed after five cows break in and sit on his sofa”.

Shaun Cullimore, Clerk to Swindon Parish Council

FREE SLICE OF PIZZA!



Annual Parish Meeting



14th May 2024: 7.30pm : Swindon
Village Hall

Everyone* welcome
Refreshments provided



Come and meet your team of councilors and hear what we've been up to lately.

Have your say on our priorities for the coming year and beyond.

Topics to include: Major developments; transport; local green space and parks;
transport; community events; and more!



**for any official business, only 18+ residents may vote*

Renaming “THE AMENITY AREA”



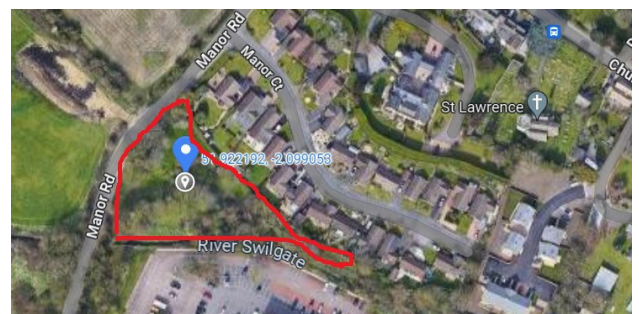
The Parish Council owns and maintains the small grassed / wooded area between Manor Road, along the Swilgate to the little bridge to Spirax (see map below). This has been called ‘The Amenity Area’ for quite some time, although it has had other names in the past. We all agree this sounds like a recycling centre and could have a much more meaningful name.

So we would like to come up with a meaningful local name for this area and we need your help!

Come along to the Annual Parish Meeting (13th May) with your suggestion, ideally with a little background / justification (just a few sentences will be fine). Then we will vote on the best on the night as well as putting it out on the Facebook group.

Alternatively, email your suggestion and justification ahead of the meeting to Shaun at:

parish.clerk@swindonparish.org.uk



Helen's Walk

Sunday 12th May 2pm

The annual Save the Countryside walk will take place as usual this year but will be called Helen's Walk after Helen Wells who tragically died recently. Helen was one of the founders of STC. She helped to start the walk on an annual basis and ensured it kept going over many years ending with tea, wine and buns in her garden.

The walk will take place on Sunday 12th May 2024 at 2pm starting, as ever, from Stantons Drive. There will most likely be the usual teddy hunt. After the walk refreshments will be served, as ever, in the garden of Trail's End, Richard and Helen's home. If anyone would like to help out with this by providing a cake or a bit of help with the teas, let me know. I will let you know nearer the date whether you are needed. I suspect there will be a queue.



For further details contact Barry Simon
barry_simon@hotmail.com



The Swindon Village Society

In March Sue Jones told us about the campaign for female emancipation in Cheltenham. I think we all know a little about the more radical aspects of the campaign. What I had not realised was that there were several groups involved and that while two of them tended towards action such as chaining themselves to railings, heckling politicians and refusing to pay taxes there were two equally effective groups who preferred to use reason and argument to put their point of view forward. And all the groups tended to have some male support, which is pleasing. Emmaline Pankhurst certainly visited the town to support the local campaign but while here she was not particularly virulent. The only real violence that occurred was the burning down of an old, shabby and unoccupied mansion.

Come the start of the First World War all this was put aside and in 1918 the first limited stages of female emancipation were put through Parliament. In the end female suffrage did triumph, but slowly, and it was not until after the Second World War the true emancipation was really achieved. So ladies, do remember to go and vote on 2 May. You have earned the privilege.

Next we have a bit of nature news. At least 2 gardens in the village have been raided by an otter and their fish ponds cleared out. Now this may be a regular occurrence but it is the first time it has been brought to my notice. So if you have a garden pond with beloved tiddlers in it now is the time to either repair your fences or bid the tiddlers farewell. Maybe these are the same otters that have been on the news as living in the lake in Pittville Park. After all it is just a shortish paddle down the Swilgate to get here. We also seem to have had a village Red Kite for some time now. They have become fairly common in the area over recent years. It is ten years since I saw my first in this area. Maybe it is time to lock your cats up too.



The Swindon Village Society

Now back to our programme. In May John Heathcott will take us on a walk around Northleach, a town with a long history and a fantastic church.

The missing talks slot in June is now filled. On Wednesday 19th June John Reid will visit to tell us about 'Funerary Monuments in Gloucestershire'. Given the Cathedral, Tewkesbury Abbey and the number of exceptional churches in the county we should have a splendid talk with some superb sculpture on show.

Finally, after the great talk on cider we had in February, I was interested to find out the area cover by the Elms Park development includes a perry orchard that the Gloucester Orchard Trust are trying to ensure is retained.

Annual membership is £10 or £20 for two or a family. Worth it if only for the glass of lukewarm wine in the Hall gardens in August.

Join Now!

Barry Simon

A new 'R' bus service has commenced, run by Pulhams.

The route is from Bishops Cleeve and Woodmancote. It then comes down Hyde Lane, travels through Wymans Lane, Runnings Road, Manor Road then Tewkesbury Road. It enters Princess Elizabeth Way, driving through Rowanfield before arriving at Cheltenham Town centre.

There are timetables and route maps on Pulhams' website. I have used the service a few times and have found it to be prompt and comfortable.

Alan Willmott



St. Lawrence's Church

RECTORY REFLECTIONS - REV JACQUELINE

Birthdays are special aren't they? In our family, they all seem to be in the Spring, and then there is nothing for the rest of the year. Like many of you, we too have developed our own way of celebrating, depending on the age of the celebrant. Cake with candles are a definite requirement and the designs and planning which go into it far exceed the ability to deliver! There are also gifts, thoughtfully purchased and carefully wrapped.

This month, the Church is celebrating Pentecost. It falls on Whit Sunday, which is 50 days after Easter. It's a festival which gets forgotten about after the celebrations of Easter. But it is one of the most important festivals in the calendar because it is the birthday of the Church. We celebrate the day that God sent the Holy Spirit to the apostles and disciples to empower them to go out all over the world and spread the good news (gospel) of the resurrection. Jesus had told his followers to wait for a gift which would help them remember what he had taught them and have the courage to share it with others. As the followers were gathered together, the Holy Spirit came upon them, "like tongues of fire" and a "rushing wind" and enabled them to speak a multitude of different languages so everyone would understand the message they were giving. That was quite a gift especially as we're still celebrating the birth of the Christian church 2000 years later. We all have something we can do which is a gift, however unremarkable we think it is.

We will be celebrating Pentecost on Sunday 19th May at 9:15am at St. Lawrence's. All are very welcome. After the service, we will be holding our Annual Parochial Church Meeting, where we will be talking about how we might grow the church and continue the work of the early



St. Lawrence's Church

disciples in our local community. If you would like to attend, or think you might be able to help or contribute to the life of St. Lawrence's, please contact Rev Jacqueline or one of the Church Wardens.

"Like good stewards of the manifold grace of God, serve one another with whatever gift each of you has received." (1 Peter 4. 10)

From the registers



Memorial Service

On 24th March we commemorated and celebrated the life of Kevin Hill.

St. Lawrence's Church

Chatterbox

Every Tuesday

10.30am to 12noon

Pop in for coffee/tea and biscuits
and a good old chat about
anything and everything.





PENTECOST KITE FLYING!

Bring your kite to Cleeve
Common on Sunday 19th May
2024 from 2:30pm.

All welcome!



Don't forget to wrap
up warmly and bring
snacks if desired!

We're meeting by
the aerals.





St. Lawrence's Church

Regular Services

1st Sunday of the month:

10.30am Together @ Ten Thirty all-age worship

6.30pm Holy Communion

All other Sundays:

9.15am Holy Communion

6.30pm Evening Prayer

Every Wednesday:

10.00am to 12noon Church open for private prayer

St. Lawrence's Church is part of the



Enquiries about baptisms or weddings

If you would like to enquire about baptism (also called christening) or would like to book a wedding in St Lawrence's church, please contact Karen in the Team Office on 01242 244373 or admin@northchelt.org.uk

You can contact the Team Vicar, Revd. Jacqueline Henson, by email: revjacquelinehenson@gmail.com or by phone: 01242 220053 or via the office as above.



Swindon Village Hall

Hello All,

We are already in May, almost half way through the year. We at Swindon Village hall are quietly working on improvements to make the hall better for you.

We were please with how many people came to the Easter Event, hopefully everybody had a good fun. We certainly did.

We have some more events in the pipeline starting with Family Games afternoon with band in the evening in June. There will be Quiz organized by church and also returning is the fatastic Bootlacers playing in October. More details to follow..

Jana

KW SHARPENING SERVICES

At KW Sharpening we can provide a professional service to sharpen almost all bladed items be it Garden Tools, Kitchen Knives or Chainsaws. We use the latest machines to give you the best service and sharpest edge for your tools. We pride ourselves on having 133 5 Star reviews on Google. If in any doubt, please give me a ring to discuss your sharpening needs.

We specialise in the following:

- Dog Grooming Scissors and Clipper Blades
- Horse Clipper Blades
- Clipper Servicing
- Hairdressing / Barbering Scissor
- Carpentry Tools Chisels, Planer Blades etc..
- Circular / Chop Saw Blades



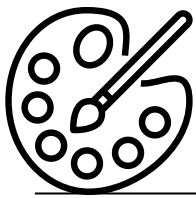
Please give me, Ken a ring to arrange a booking, and subject to prior workload most jobs are done in 48 hrs.

If an item is needed urgently, I keep slots available for a same day service and if the workload allows it can be done whilst you wait.

Unit 15 Space Business Centre, Tewksbury Road (Behind Homebase) Cheltenham GL51 9FL

Call: **07379 4522942** Email: ken@kwsharpening.co.uk

Instagram: [@kw_sharpening](https://www.instagram.com/kw_sharpening) Web: www.kwsharpening.co.uk

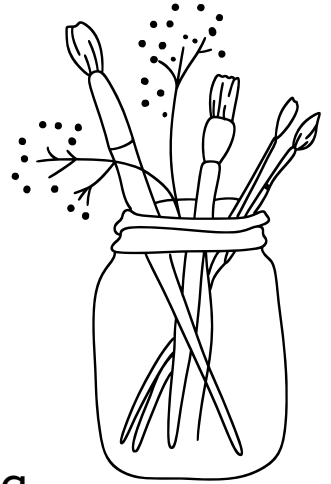


Swindon Village Arts and Craft

Well its that time again, our club has its Annual Exhibition:

JUNE 8th at Swindon Village Hall
2pm till 4.30pm free entry

Refreshments, work displayed by our members, and a display of art work from the village school based on the theme of the Olympics. Well worth a visit, so we welcome as many of you that can make it.



**LIGHT BITES | CAKES
| ARTISAN BAKER
PASTRIES & BREAD |
MILKSHAKES |
CARDS & GIFTS**

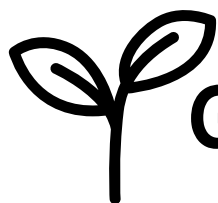
**great
coffee
starts
here..**



@mooshco



24 Chosen View Road, Kingsditch
Trading Estate, Cheltenham, GL51 9LT



Go grow with Dale

May is upon us already Gardeners and the growing season is well underway. I took a gamble on my first early potatoes and put them in my raised beds in the middle of February as it was so mild, the risk seems to have paid off, no frost damage and I think they'll be ready for harvesting this month.

This month I'm going to talk about a very traditional fruit crop, Raspberries, in specific the many different varieties including one very unique 'Tree' variety!

I've covered the basics of Raspberry Canes in a previous issue, but in short, Canes are the cheapest way to buy Raspberry plants around Autumn.

If you're wanting to buy Raspberry Plants now, it's good to know what variety you want as some are Summer fruiting, some are Autumn fruiting. This means if you want a longer harvest period, it's good to have a mix of both and remember they freeze well for storage. The easiest Summer variety to grow is 'Glen Ample' and for Autumn 'Autumn Bliss' (a Monty Don Favourite) so look out for these if you're planning to buy in the near future.

A more groundbreaking Raspberry variety bred in Japan has only become available in the last few months. The 'Rubus Hararasp', a world first 'Tree' variety that grows up to 1.75m tall and fruits in Summer. This is a beautiful looking but very hardy perennial that's very easy to grow in pots. I'm definitely buying one soon.

That's all for this month, who can believe it's officially summer soon? Until next time, thanks for reading.

Dale.

LOCAL DISCOUNT

PUREDRIVE
ENERGY

Calling Gloucestershire...

Save 75%* on Your Energy Bills

You can save a significant amount on your home energy bill with a Puredrive energy storage battery and inverter solution without the need for solar.



Fully Integrated Energy Products

Puredrive's Smart APP integrates energy products and dynamic time-of-use tariffs seamlessly, and manages your energy so you don't have to.

Automate and maximise your savings - hassle free!

Why Puredrive?

Our battery storage is smarter, faster and longer-lasting, meaning you will get the best return on investment and fastest payback on the market in less than 5 years!* Supported by over 100 technical staff based locally in Toddington!

Get A Quote Now!



Scan and Start Saving...



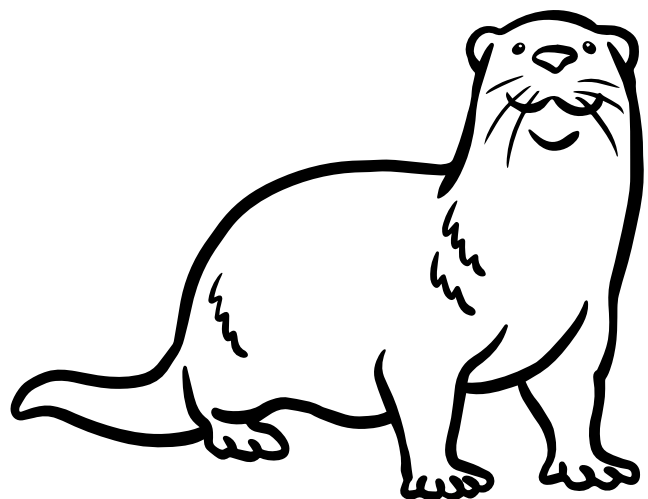
01386571544

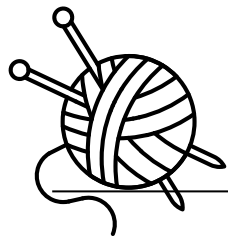
30% Off

*75% savings are made possible in conjunction with a time-of-use energy tariff

Mind, body and soul

1. Carl Jung coined words for people who prefer being with other people and those who prefer being alone. What are those words?
2. Which is the human body's largest organ?
3. Which civilisation had gods including Isis and Horus?
4. Which hemisphere of the brain is usually associated with creativity?
5. In which part of the human body would you find the metacarpals?
6. There are two archbishops in the UK; one is Canterbury, what is the other?
7. Richard Madeley, Janet Street Porter and Amy Schumer have all publicly discussed being affected by what issue related to self-confidence?
8. Adrenaline is often called the fight or flight hormone (as a response to fear), but there two other possible responses, also beginning with "f". Name one of the two?
9. What festival is sometimes called the Hindu Festival of Lights?
10. Mindfulness, which is a practice designed to combine the mind, body and soul is based on what religion?





Marle Hill WI

We met on Monday 8 April we had John Johnson of Johnson's Coaches who told of the origins of the company. It was his Grandparents who started the business and John is the third generation of Johnson's to run the business. John was very entertaining and interesting.

We had the bring and buy stall and then we had the business side of the meeting. We were informed of the dates for the book club, knit and natter, monthly lunch club. Our team came third in the County Quiz. We also asked for volunteers to help with the catering at the upcoming Royal Three Counties Show.

We usually meet on the first Monday of the month but in May we will be meeting on Monday 13 May due to the first Monday being a Bank Holiday.

Do come along to our next meeting where we will be discussing the National Resolution on asking the Government to provide more NHS Dentists and a practical guide to show members on how to get onto MyWI.

Visitors are always welcome.

Sue Davies
Marle Hill WI

Answers to Quiz

- | | |
|----------------------------|---|
| 1. Extrovert and introvert | 7. Imposter Syndrome |
| 2. The skin | 8. Freeze or fawn (ie placate the source of the risk) |
| 3. Egyptian | 9. Diwali |
| 4. The right | 10. Buddhism |
| 5. The hands | |
| 6. York | |

Rose Preddy

Mobile Hairdresser
also fully qualified in
Reflexology &
Indian Head Massage

Mobile 07767 202634
Home 01242 672975



ADVERTISE YOUR BUSINESS HERE

Buy two months,
get a third free

- Quarter Page £9
- Half Page £18
- Full Page £36
- Artwork design available
FOC
- Hand delivered to 900 homes
in Swindon Village

PW Footcare

Foot Health Practitioner
P. White.Dip SAC FHP, RGN, BSc (Hons)



Qualified and insured.
Providing a mobile clinic to
people at home or in care
homes. Using sterilized
tools. DBS checked.

Conditions Treated

Corns and calluses
Ingrown toenails
Cutting and filing toenails and thickened toenails
Verrucas
Athlete's foot
Diabetic foot care

Contact Pushpa for any further information on

07873575560
01242 250691

Email: pushpa@pwfootcare.co.uk
Website: pwfootcare.co.uk

THE 1:1 DIET

by Cambridge Weight Plan®



**You can
absolutely
100% do this.**

For definite. No doubt.



comfortable home office
with free parking



Contact your local Consultant

Jackie on 07990 503067

jackiemcdonough60@gmail.com

to book your initial free consultation

SWINDON PARISH COMMUNITY ORGANISATIONS

Footpaths John Heathcott 527753

Scouts, Cubs, Beavers info@ 1sv-scouts.co.uk

Rainbow Guider Hannah Butler 07464 784155

Village Hall Chair Jana Bridger 07913 911930
swindonvillagehall@gmail.com

Village Hall Booking Secretary Jana Bridger swindonvillagehall@gmail.com

Village News Distribution Hugh Evans 241678

Play Group (Playgroup hours) 690479

Winemakers' Secretary Roy Harper 662861

School Headteacher Geraint Mills 690016

Friends of the School chairfosvps@gmail.com

Art & Crafts Club Lynne Mumford 07515 461876

Swindon Village Society Barry Simon 521723

Mary Godwin Under 5s (Playgroup hours) mgu5@hotmail.co.uk

Marle Hill W.L. Sara Jefferies 07477894639 / 692500

Please inform the editors of any changes to the contact details for village organisations.

Deadline for the next issue of the Village News is the 11th May 2024

Please send contributions to the editors via Karren Parsons
at 29 Dark Lane or e-mail village-news@swindonparish.org.uk

SWINDON PARISH COUNCIL

Cllr. James Cornish (Chairman).....	07950 196709.....
Cllr. Lisa Whitaker.....	07715 470842
Clr. Sharon Collicutt.....	07884 184423
Cllr. Natalie Blankley.....	07725 948935
Clr. Alison Berry	07754 006634
Clr. Lynne Allen.....	07979 890134

Vacancy 1 (please get in touch if you would be interested in joining)

Vacancy 2 (please get in touch if you would be interested in joining)

Vacancy 3 (please get in touch if you would be interested in joining)

Mr Shaun Cullimore (Clerk to the Council) 07833 089435
parish.clerk@swindonparish.org.uk

Cheltenham Borough Councillors

Clr. Flo Clucas.....	255844
Cllr. Bernard Fisher.....	07523 421012

County Councillor

Cllr. Bernard Fisher.....	07523 421012
---------------------------	--------------

Allotments Manager

Chaz Pearce..... Please contact via Shaun Cullimore

Swindon Parish and Community Website: <https://swindonparish.org.uk>

ST.LAWRENCE'S CHURCH

Part of the North Cheltenham Team Ministry

Team Vicar: Revd. Jacqueline Henson revjacquelinehenson@gmail.com
220053

Churchwardens: Hugh Evans,241678
May Shurmer.....241033

Tower Captain: Hugh Evans,.....241678

Organist: John Collins.....511950

North Cheltenham Team Ministry Office

St. Nicolas' Church, Swindon Lane, 244373
Cheltenham GL50 4PA admin@northchelt.org.uk

The office is open on Monday to Friday 9am to 12 noon. Outside these hours please leave a message on the answer phone.

The contents of this newsletter do not necessarily reflect the views of the Editors or the Parish Council.