

Village News

in Swindon Village, Cheltenham

*Your local newsletter sponsored by the Parish
Council and delivered by volunteers.*

December 2023 Edition No.499

Upcoming Events



DECEMBER

Saturday 2nd Christmas Tree Festival St Lawrence Church

Sunday 3rd Christmas Tree Festival St Lawrence Church

Litter Pick. Meet 10.30am at Cross Hands

Thursday 7th Tree Felling / Reducing Amenity Area

Monday 11th Parish Council Meeting Village Hall 7.30

Thursday 21st Christmas Grotto at the Village Hall

Friday 22nd Christmas Grotto at the Village Hall

Sunday 31st New Year's Eve Party at the Village Hall.

JANUARY

Sunday 7th Litter Pick. Meet 10.30am at Village Hall

Monday 8th Parish Council Meeting

Wednesday 10th Allotments AGM Village Hall 7.30

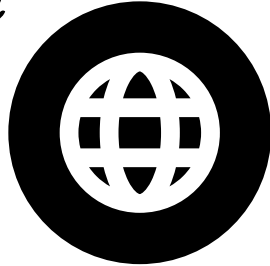
Wednesday 17th Swindon Village Society. AGM followed by
tea and then a short presentation on some
aspects of Village Life. Village Hall 7.30pm.



A Connected Community!



Using your phone's camera to hover over each QR Code square below for direct link access.



Parish Council Website

For full, detailed information from and about the Parish Council visit www.swindonparish.org.uk



Parish Council Facebook Page

A public page for live information and news updates from the council:
www.facebook.com/swindonparish



Swindon Village Facebook Community Group

A private group for the discussion of local issues, sharing and requesting help in the local community.



Anti-Social Behaviour

If you have any concerns about anti-social behaviour do not hesitate to contact the police.



Ring 101 (you may be charged for this phone call) or **email**
101@gloucestershire.police.uk

NB: Get an INCIDENT REPORT NUMBER and let the parish know about it. If the police are not made aware of the problem THERE ISN'T A PROBLEM.



A Note From The Editor

With Christmas around the corner, our thoughts turn to all things Festive.

Like most families, we have traditions based around food and time spent with our loved ones. Our celebrations start on Christmas Eve with a family meal and go through to 27th ending on a day of eating left-overs and playing games. Christmas is open house for us – we stay at home and family are welcome to join us for any or all of the days. Christmas Day is a traditional one with turkey and presents and is centred around any children who come.

Our favourite day is Boxing Day. It's a no cook zone, with the exception of mashing the left over veg into bubble and squeak and possibly warming the second Christmas pudding. Bring and share is the order of the day – In addition to the left-over turkey, Marion, my mother-in-law brings ham, and my Aunt makes the most fantastic coleslaw and potato salad. We have a wide range of ages and at some point, between lunch and pudding, absolute chaos reigns. We play silly games of bingo, snakes and ladders and races involving wind up Christmas toys. It's not often that we get to spend this time with close family, but everyone keeps Boxing Day free for this to happen.

It will be a couple of months until my next Editorial, by which time Christmas will be a (hopefully) not too distant a memory. I wish you all a happy time and hope that you are able to take the time to be with loved ones over the Festive Season. To mis-quote from one of my favourite films “if you can't do that at Christmas, when can you eh?”

Karren



Swindon Parish Council

SWINDON PARISH COUNCIL REPORT

Last month I wrote about the electricity supply problems in Swindon Lane. To fix the issue the supply to a number of houses had to be switched off for part of the night of 26th October. Some people were understandably concerned and nervous. We all need to be good neighbours at times like that. Anyway, we are now all fully electrified!

We have experienced yet more fly tipping. Some of the items could have been taken to a charity shop to do some good. Fly tipping is never funny but it does make me smile when people leave receipts and other paperwork in with the rubbish that makes it possible to identify them! Sadly not the case this time.

On the subject of rubbish, we continue to do our monthly litter picks. We were joined by a few more residents at the last one. I was afraid events were only being supported by Parish Councillors so it was great to see more people joining in. Come on, it is actually fun! The dates for the next events are on the cover of this (and every) issue. Afterwards we compare notes to see who has found the strangest item. Last time I found a pair of bolt croppers thrown in a hedge. No self respecting burglar would leave home without a pair. Can a burglar have self respect? Probably not.

The Elms Park development has started with the hedge along Manor Road being cut down. We think the hedge cutting was more extensive than the developer had shown on its plans, not a great start. We'll see what the planning officer thinks. The developer needs to know that we will hold them to account!

I mentioned last time that the diseased chestnut trees in the Amenity Area are due to be dealt with on 7th December. There may be restrictions on people walking in the area while the work is being done.



Swindon Parish Council

Congratulations to our allotment holders who held a bonfire on 5th November. Getting anything to burn in this weather is quite an achievement! Chaz and Gill are planning to hold an AGM for the allotment holders on 10th January 2024 in the Village Hall. Thanks to them (and the allotment holders) all the allotment rents have been collected and banked, good effort! I didn't want to have to send someone round to dig up your vegetables.



November's edition of the Village News was printed by a different printer. Did you notice any difference? One of our councillors said that it smelt different. Not better or worse, just different! At the next quiz we'll blindfold people and ask them to "Name that printer". The delivery to households probably took place during the tail end of Storm Ciaran, so well done to our wonderful team of distributors!

This is the time when the Parish Council sets its budget for the coming year (1st April 2024 to 31st March 2025). As ever we will be looking to offer the community value for money. Once we have set a budget James, our Chairman, will explain what it means for council tax payers and what our priorities will be for the coming year.

Now, let's get Christmassy!

What could be more festive than rubbish and recycling? Over the Christmas period remember that the collection days will be different. Karren may find room for the information in this issue of the Village News. If not, I have published the details on the website. The Borough



Swindon Parish Council

Council has also promised to send me some posters for our noticeboards.

The Christmas Tree Festival at St. Lawrence church is fast approaching (2nd and 3rd December). The Parish Council is very grateful to Steph and Ethan who, I hope, will be entering a Christmas tree on our behalf. If you are not entering a tree at least go along and see what others have done. I suspect you will get a cup of tea for your trouble.

Remember there is no Village News in January. You won't know what to do with yourselves. I think Karren is now going into hibernation and will resurface in February, bright eyed and bushy tailed.

Merry Christmas and Happy New Year to everyone. Be kind, look after yourselves and others.

Shaun Cullimore
Clerk to Swindon Parish Council



Waste and Recycling in Cheltenham

Christmas and New Year 2023-2024

This collection is taking place two days early!

Normal Collection Day	Revised Collection Day
Monday 25 December 2023	Saturday 23 December 2023
Tuesday 26 December 2023	Wednesday 27 December 2023
Wednesday 27 December 2023	Thursday 28 December 2023
Thursday 28 December 2023	Friday 29 December 2023
Friday 29 December 2023	Saturday 30 December 2023
Monday 1 January 2024	Tuesday 2 January 2024
Tuesday 2 January 2024	Wednesday 3 January 2024
Wednesday 3 January 2024	Thursday 4 January 2024
Thursday 4 January 2024	Friday 5 January 2024
Friday 5 January 2024	Saturday 6 January 2024

Normal collections resume Monday 8 January 2024

Garden waste collections will be suspended at the end of Friday 15 December 2023 and will resume from Monday 15 January 2024.

Help us to recycle right - Have a look at our top tips!



No broken glass in your recycling box please, wrap it up carefully and pop it in your refuse bin.



Please put all brown paper into your blue cardboard bag.



Over the festive season, remember to recycle your glass bottles, drink cans and real Christmas trees.



If you are confused, ask the waste wizard how to recycle, donate or dispose of your household items using the QR code below.

Opening hours at the Swindon Road household recycling centre



Monday - 8:30am - 4pm
Tuesday - 8:30am - 4pm
Wednesday - CLOSED

Thursday - 8:30am - 4pm
Friday - 8:30am - 4pm
Saturday - 8:30am - 3pm

Sunday - 9am to 12pm

Please visit www.cheltenham.gov.uk/christmas-opening-hours to view the Christmas and New Year opening times



Cheltenham recycles

For more information please call
01242 262626 or visit
www.cheltenham.gov.uk/recycling





St. Lawrence's Church

Reassurance in Trying Times!

There can be a tendency to over-complicate the Christian faith. So it is really good news that the Christmas story is almost here to be told again in all its richness! Of course, we know how it runs and we know how it ends. In that sense, it is not 'new news'. But the very familiarity is a source of tremendous comfort for many. And the ritual of Christmas services – Christingle, Carols by Candlelight, Midnight Mass – is a subconscious rock on which many of us depend.

This year ends with more uncertainty and more conflict at large than in most recent Christmas times. I hope that your local church, St Lawrence, can be a place of reassuring familiarity and comforting ritual when so much around us seems unstable and anxiety-inducing.

You'll see the schedule of Services at St Lawrence here in your Magazine and all we are trying to provide the best worship possible. This has been a difficult year for us at Church, as we have done our best to cope with much reduced clergy numbers, but have kept all our services running with the help of our retired vicar friends. Can I thank you for all your support and a blessed Christmas season. Meanwhile, we look forward to Revd Jacqueline joining us in a special welcome Service on Wednesday 31st January at St Lawrence Church at 7 pm, with a lovely celebration afterwards in the Village Hall!

Thank you.

Revd Nick Bromfield, Team Rector of North Cheltenham



St. Lawrence's Church, Swindon Village

Christmas Tree Festival

A Favourite Book or Film

Saturday 2nd December

Sunday 3rd December

11am to 5pm

See the decorated trees

Raffle for a Christmas hamper

Christmas sales table

Refreshments

Saturday only at 2.30pm

Singalong with The Ukuladies

Free admission

Donations to St. Lawrence's
church maintenance funds





St. Lawrence's Church

Licensing service for Revd. Jacqueline Henson

We are looking forward to the arrival of our new Vicar.


Revd. Jacqueline Henson will be licensed and formally welcomed to the North Cheltenham Team Ministry at a special service in St. Lawrence's church on Wednesday 31st January at 7pm.

The service will be followed by refreshments in the Village Hall.

Everyone is welcome to attend but a phone call to Karen Evans (01242 241678) would be helpful in assessing numbers for seating and catering.

St. Lawrence's Church

Chatterbox



Every Tuesday
10.30am to 12noon



Pop in any time
Coffee/tea and biscuits
and a good old chat about anything and everything.
Everyone's welcome, old or new.
(It's free!)

Please note there will be NO Chatterbox on Boxing Day.

Christmas and New Year at St. Lawrence's Church

Everyone will be welcome at our Christmas services

Sunday 17th December
6.30pm Service of Lessons and Carols

- Sunday 24th December Christmas Eve
9.15am Holy Communion
4.00pm Crib Service
(Come dressed as a character from the Nativity story)
11.30pm First Communion of Christmas (Midnight Mass)

Monday-25th December Christmas Day
9.15am Holy Communion

Sunday 31st December New Year's Eve
9.15am Holy Communion
(No evening service)

Sunday 6th January - Epiphany
10.30am Together @ Ten Thirty
(An all-ages service celebrating the arrival of the Wise Men)
6.30pm Holy Communion





St. Lawrence's Church

 North Cheltenham
Team Ministry

St. Lawrence's Church
Swindon Village

Regular Services

1st Sunday of the month:

10.30am Together @ Ten Thirty all-age worship

6.30pm Holy Communion

All other Sundays:

9.15am Holy Communion

6.30pm Evening Prayer

Every Wednesday:

10.00am to 12noon Church open for private prayer

(Services are subject to change at short notice;
contact the Churchwardens if you want to check.)

Enquiries about baptisms or weddings

If you would like to enquire about baptism (also called christening) or would like to book a wedding in St Lawrence's church, please contact Karen in the Team Office on

01242 244373 or **admin@northchelt.org.uk**

You can contact the clergy via the office or by email:

Revd. Nick Bromfield (Team Rector) **nick.bromfield@northchelt.org.uk**
or via the office.

Carols in the Bar

Sing your favourite Christmas carols
with the choir of St. Nicolas' Church

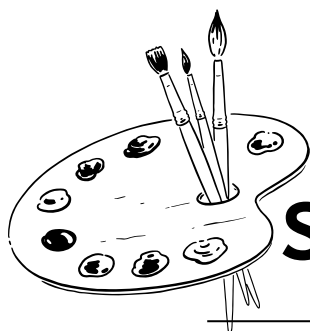


Friday 15th December at 7pm

In the Village Hall Bar

Mulled Wine and Mince Pies

All welcome



Swindon Village Arts and Craft

“The Swindon Village Art and Craft Club have restarted meeting on Thursday evenings in the Village Hall, from 7.30 - 9.30pm and aspiring artists and creators are very welcome to come and join us. We generally bring a project we are individually working on and have a Class or Talk once a term, which we all enjoy.

All skill levels are welcome to attend - the more the merrier - and our professional artist, Pam Stone, is always happy to advise and pass on her knowledge.

We look forward to welcoming you soon!



Swindon Village Hall

And just like that we are in the last month of the year!

It has been an eventful year, literally! As I write, we are preparing for the Christmas Craft Fair and Quiz Night. We hope you enjoy them all as much as we enjoyed organising them for you. But we are not done yet! We would like to invite you to visit Santa's Grotto again this year, which will be on 21st and 22nd of December. Watch out for more details on our social media and posters around the village.

Many thanks to Martin, who like last year has taken on organising the New Years Eve party. Tickets are available to purchase from the bar on Friday nights only, up until Friday 22nd of December.

Many jobs, big and small have been completed at the Hall to make it better place for us all. We hope you can see the difference and we promise to keep going in the next year. Next big job is to give all areas fresh lick of paint, which we are hoping will make big difference.

We want to thank to all volunteers as without you we could not do many of these things and we really appreciate you all. We wish everybody Merry Christmas and Happy New Year and we will see you in 2024. Take care, Jana

DOGS IN THE BAR

Unfortunately, we have had a few negative comments about the number of dogs in the bar room on a Friday night. As families are all inside the bar room in the winter months, we have taken the difficult decision to not allow dogs in the hall. They are welcome on the terrace and of course this does not apply to assistance dogs. We appreciate your support in this matter.

The Committee

Christmas

1. What was the Roman festival celebrated around the winter solstice?
2. Which carol was sung simultaneously by English and German troops during the Christmas truce of 1914 during World War I?
3. How many gifts (in total) did my true love send to me according to the Twelve Days of Christmas?
4. Which country sends a Christmas tree to Trafalgar Square every year in thanks for support during World War II?
5. Approximately how many lego sets are sold, per day, in the world in the Christmas period?
6. Which King of England was crowned on Christmas Day in 1066?
7. Which act had three Christmas Number Ones in a row in the 1990's?
8. In which film did "White Christmas" first appear?
9. Who wrote "How the Grinch stole Christmas"?
10. What spice is used to flavour bread sauce?

*Merry
Christmas*



The Swindon Village Society

October's talk was from Chris Witts who told us about the Severn Bore. It is a very variable phenomenon, being dependent upon tides, wind, atmospheric pressure and just which way the Severn got out of bed that morning. At its best it is an amazing sight and for some an amazing plaything. It certainly attracts crowds but judging just when and where to see it is quite an art. I have only seen it once and that was by accident as I was walking the river bank near Hempstead. It was only a half height event but my abiding impression is of the amount of rubbish it was bringing along and depositing on the banks. But then I sail on the Severn at Chaceley Stock about two miles south of Tewkesbury and so I am used to that. We do not get the bore that far upstream but we do get interesting things floating by. The dead sheep we get from Wales in February are best avoided. They are full of gas and if your dinghy hits one it could well explode so everyone in the race gets a lamb chop. Ten years ago there was a live seal in the river which joined us on our annual kids sail to the Lower Lode pub and popped up and smiled at each boat which was a great joy. And last year we had two harbour porpoises nosing around our boats.

Now here is a bit for those who don't know the Village Society. We are really the Nimbys, for the village (Not In My Back Yard). We try to restrain inappropriate development. This year we have written against the proposed communications mast on Rivelands Road and against the early development of Home Farm and which would have meant all the material for over two hundred new houses being transported through the village. We have also done some work to restore the millennium sun dial on the playing field and done an update on local paths for the Parish Council. We investigate the village's history and this can be very useful in stopping the wrong sort of development and so many of our talks are on local history or wildlife. If you support this sort of activity do think of joining us.

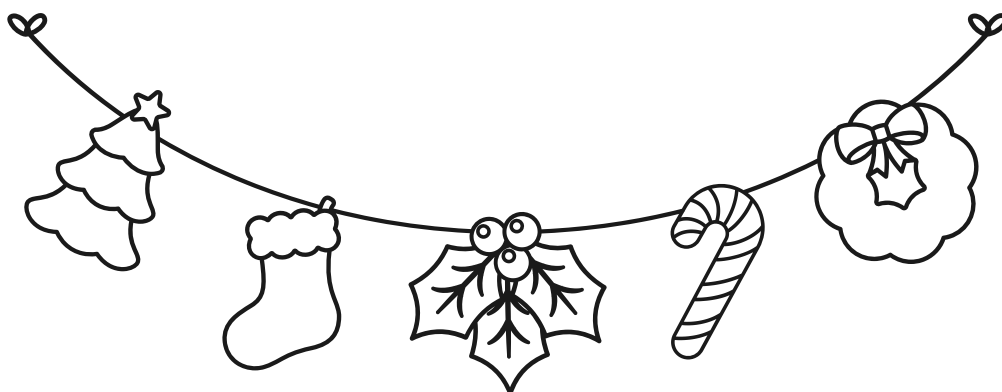


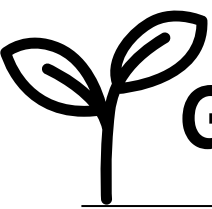
The Swindon Village Society

You don't have to actually do anything, though we are pleased if you do and even happier if you attend our meetings. It is much better if I can write a letter saying I represent one hundred concerned locals than twenty. In general we support the Parish Council but can say we are an independent voice. It is also much easier for us to be rude if that becomes necessary – there are not too many rules for Nimbys.

And now a bit about next year. All we have so far is the AGM in January which is always short. Following that there will be tea and biscuits and then a short exposition on some parts of village life. We are still working on that. If you are thinking of joining this is a good time to do it. In February our talk will be on The History of Cider in Gloucestershire. There will be no free samples but you can bring your own. In April we will have a talk on Belas Knap and the nearby wood called Humblebee. In May John Heathcott will be taking us on a walk around Northleach, a small town with a lot of history and a magnificent church. There will be a garden visit July and our usual garden party in August. In September, by popular demand, Tim Brain will return to us to give us his talk on the 2007 water crisis for a second time at which time he was Chief Constable. This is probably the best talk we have had and it has the advantage that we were all here for this crisis. We are still working on the rest. Watch this space. So do come and join us, even if it is just a trial visit for one event.

Barry Simon





Go grow with Dale

Happy Christmas to all you Gardeners. I hope Santa brings you some Gardening related gifts! I can't wait for Christmas this year, with my son having turned 2 in November and his memory getting so good now, I can't wait to see his excitement on Christmas Morning.

As we move into Winter this month, I know from experience it can be a worrying time for a Gardener, wondering if all your non super hardy plants will survive the frosts. Last Winter I lost one plant, a large Agapanthus, even after covering it over with winter fleece, but in hindsight, this was probably down to it being too exposed in the middle of my garden and not cutting it back hard enough. I know experienced Gardeners who lost a lot more though, my Dad who lives on Riveland Road was most disappointed to lose some large banana plants, even after wrapping them up. Unfortunately our weather is changing so drastically, the only way they would've survived would've been to bring them indoors, which isn't always practical. This year he's since replaced them with the hardiest Japanese variety 'Musa Basjoo' that are hardy to -15 unprotected.

This leads me onto what you can do to protect your beloved plants. As forementioned, be sure to buy a roll of Winter Fleece from a Garden Centre, along with some metal membrane pegs. This will allow you to cut the winter fleece to size (always cut more than you think to cover your plant) and pin it in place with the pegs to stop it blowing away. Always only use one layer of fleece as you don't want to block out all of its light. Once you've done this once, you can likely reuse the same piece of Fleece the following year for the same plant.

I use the above method to protect Hydrangeas, Chrysanthemums, Strawberries & Lavatera and it applies to many more. Some of these are only hardy to -10 but fleecing was enough to keep them alive even when we had -19 on that one night in December 2022.

Go grow with Dale

Though again, on reflection, all of these were in pots that were reasonably close (within 1.5m) to my house's cotswold stone wall, which I now know creates a slightly warmer microclimate from the heat retained in the stones of my wall. Makes sense, so be sure to do the same for any potted plants you're worried about, it might just save them!

I hope you've all enjoyed my Gardening articles this year, many thanks to those of you who've complimented it in person upon recognising me walking round the village. I look forward to bringing you more next year, until then, wishing you all a merry Christmas and a happy new year!

(Picture from Snow in December last year)



ADVERTISE YOUR BUSINESS HERE

Buy two months, get a third free

- Quarter Page £9
- Half Page £18
- Full Page £36
- Artwork design available FOC
- Hand delivered to 900 homes in Swindon Village

Swindon Village Hall New Years Eve Party

Dancing to KC's Disco



Bring your own food

£7.50/person

**Under 16 free (when accompanied by
parents /guardians)**

7pm - 1am

**Tickets only available from the village
hall bar on Friday evenings**

Answers:

1. Saturnalia
2. Silent Night (although some sources also say "All Come All Ye Faithful" with the Germans singing it in Latin)
3. 364
4. Norway
5. Approx 2.5 million (28 per second!)
6. William I (the conqueror)
7. The Spice Girls
8. Holiday Inn
9. Dr Seuss
10. Cloves



A Taste of Thermomix

At the Village Hall

*Saturday 13th January 2024
10AM for 10h15 start until 12 PM*

At Thermomix®, our mission is to make fast, healthy and easy cooking available to everyone.

This is an ideal opportunity for you to discover the amazing features and benefits of owning a Thermomix® or learn new tips and tricks if you already own one.

Simply join us on Saturday and we will demonstrate how to whizz, chop and blend your way to fantastic meals, and you will be able to taste everything we make.

Don't miss your chance to experience everything the Thermomix® has to offer in this fun and friendly environment. We look forward to seeing you.

Book your free ticket by registering on Eventbrite.

Places are limited.

<https://tasteofthermomix.eventbrite.co.uk>

or contact Suzanne de Chabot 07990 619 305
Anne Emery 07836 311 859

The Beauty HUT

Qualified and insured Beauty Salon located in Swindon Village.

Offering eyelash extensions, lash lifts/tints, Brow treatments including threading/tinting/lamination. Skin tightening treatments also available.

Please contact Helen 07989 236180



@the.beauty.hut.Cheltenham



Qualified & insured 5* Aesthetics Clinic located in Swindon Village, Cheltenham.

Offering Dermal Fillers, Anti-Wrinkle treatments, Skin Boosters, Fat Dissolving Injections, B12 Injections, Under-eye treatments, Collagen Induction Therapy and more.

Read our 5* Google Reviews to see what our clients really think.

Please contact Molly on 07818 553830 to book an appointment or a FREE consultation.



@ma_aesthetics_clinic
www.maaesthetics.com



Extensions
Refurbishments
Loft Conversions
Kitchen/Bathroom Remodels
Interior/Exterior Decoration
General Building Maintenance

Tel: 07855 875 933

PW Footcare

Foot Health Practitioner
P. White.Dip SAC FHP, RGN, BSc (Hons)



Qualified and insured.
Providing a mobile clinic to
people at home or in care
homes. Using sterilized
tools. DBS checked.

Conditions Treated

Corns and calluses
Ingrown toenails
Cutting and filing toenails and thickened toenails
Verrucas
Athlete's foot
Diabetic foot care

Contact Pushpa for any further information on

07873575560
01242 250691

Email: pushpa@pwfootcare.co.uk
Website: pwfootcare.co.uk



Blank Canvas Cakes

Natasha Hawkins

Blank Canvas Cakes is about creating beautiful distinct artwork on
delicious freshly baked cakes.

Delicious design
Distinctly yours

Make your day extra special with a unique cake that is designed all around
you and your special moments. A freshly baked cake, fully iced and then
painted with your unique design idea or alternatively if you wish to provide a
ready baked cake I am also happy to apply the wonderful finishing touches of
icing and painting the design.

20% Discount off your first order
with this advert



contact



@ BlankCanvasCakes

FREE CONSULTATION

Prices start from:

£25 design/decorating
services
£50 8" baked & decorated
cake
*DELIVERY ALSO
AVAILABLE

SWINDON PARISH COMMUNITY ORGANISATIONS

Footpaths John Heathcott 527753

Scouts, Cubs, Beavers info@ 1sv-scouts.co.uk

Rainbow Guider Hannah Butler 07464 784155

Village Hall Chair Jana Bridger 07913 911930
swindonvillagehall@gmail.com

Village Hall Booking Secretary Jana Bridger 07514 594351

Village News Distribution Hugh Evans 241678

Play Group (Playgroup hours) 690479

Winemakers' Secretary Roy Harper 662861

School Headteacher Geraint Mills 690016

Friends of the School chairfosvps@gmail.com

Art & Crafts Club Lynne Mumford 07515 461876

Swindon Village Society Barry Simon 521723

Mary Godwin Under 5s (Playgroup hours) mgu5@hotmail.co.uk

Marle Hill W.L. Sara Jefferies 07477894639 / 692500

Save The Countryside Helen Wells 07770 986078

Please inform the editors of any changes to the contact details for village organisations.

Deadline for the next issue of the Village News is the 16th January 2024

Please send contributions to the editors via Karren Parsons
at 29 Dark Lane or e-mail village-news@swindonparish.org.uk

SWINDON PARISH COUNCIL

Cllr. James Cornish (Chairman)	07950 196709
Clr. Helen Wells	220875 or 07770 986078
Cllr. Lisa Whitaker	07715 470842
Clr. Sharon Collicutt	07884 184423
Cllr. Natalie Blankley	07725 948935
Clr. Alison Berry	07754 006634
Clr. Lynne Allen	07979 890134

Vacancy 1 (please get in touch if you would be interested in joining)

Vacancy 2 (please get in touch if you would be interested in joining)

Mr Shaun Cullimore (Clerk to the Council) 07833 089435
parish.clerk@swindonparish.org.uk

Cheltenham Borough Councillors

Clr. Flo Clucas	255844
Cllr. Bernard Fisher	07523 421012

County Councillor

Cllr. Bernard Fisher	07523 421012
----------------------	--------------

Allotments Manager

Chaz Pearce..... Please contact via Shaun Cullimore

Swindon Parish and Community Website: <https://swindonparish.org.uk>

ST.LAWRENCE'S CHURCH

Part of the North Cheltenham Team Ministry

Team Rector:	Revd. Nick Bromfield,.....	nick.bromfield@northchelt.org.uk
Churchwardens:	Hugh Evans,	241678
	May Shurmer.....	241033
Tower Captain:	Hugh Evans,.....	241678
Organist:	John Collins.....	511950

North Cheltenham Team Ministry Office

St. Nicolas' Church, Swindon Lane, 244373
Cheltenham GL50 4PA admin@northchelt.org.uk

The office is open on Monday to Friday 9am to 12 noon. Outside these hours please leave a message on the answer phone.

The contents of this newsletter do not necessarily reflect the views of the Editors or the Parish Council.